



SALISBURY 6TH FORM COLLEGE

NEWSLETTER FOR OUR PARENTS/CARERS

PRINCIPAL'S MESSAGE:

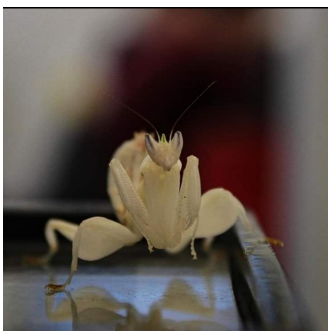
Following the Government announcement yesterday, regarding the Coronavirus. I would be grateful if parents could notify College if your son or daughter will be self isolating as a result of displaying symptoms of the virus. If your son or daughter is tested for the virus please could you let us know the outcome

As per the letter from the Magna Learning Partnership this week, please ensure that you check the website below for any updates relating to the Coronavirus and implications for all schools and academies within the trust.

<https://www.magnalearningpartnership.org.uk/coronavirus-advice-update/>

Science Week

On Monday as part of the Science week we had some creatures in reception. Students and staff were able to hold and learn a little more about these wonderful creatures. Thank you to Myles Baker in year 12 took some great pictures;



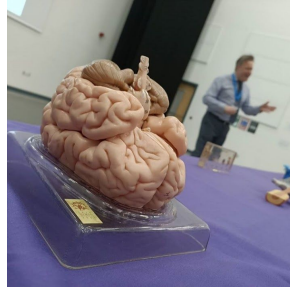
College Late Opening for Students

College will be opening slightly later for those students who may wish to stay behind, on a Monday, Tuesday and Thursday until 5pm to continue their subject work in the Study Centre. Students are only permitted to stay in the Study Centre to complete their work and a member of the senior leadership team will be on site to supervise during this time.

NEWSLETTER: 10
13th March 2020

Brain Day

Today was Brain Day at S6C - we had Neuroscientist Dr Stutton in College giving insightful talks to our Psychology Students in both year 12 and 13. Thank you to Ms White for arranging this fascinating day for the students.



UPCOMING DATES

- 1st & 2nd April - Development Day for students. The topic is "Wellbeing and Sexual Health".